



Mobile Printers

# MX20

With MX20 on hand, label printing becomes so simple between your fingertips.

MX20 is powered by high capacity lithium-ion battery, armored with water/dust/shock resistant feature, supported with drop-and-fit design; it is your ultimate weapon to take on the challenges from mobile applications in retail / warehouse & storage / parking receipt industry and many more.



- Drop & Fit label installation design.
- Long standby time up to 72 hours or 300 label cycles between charges.
- IP54 water / dust resistant and 1.5M shock resistant.
- Supports both wire (RS232 and USB ports)

**GODEX**

# Specification

## MX20

### Mobile Printer

Model	MX20
<b>Print Method</b>	Direct Thermal
<b>Resolution</b>	203 dpi (8 dots/mm)
<b>Print Speed</b>	Up to 4 IPS (101.6 mm/s)
<b>Print Width</b>	1.89" (48 mm)
<b>Print Length</b>	45" (~1142 mm)
<b>Processor</b>	32 Bit RISC CPU
<b>Memory Flash</b>	128 MB Flash (60 MB for user storage)
<b>SDRAM</b>	32 MB
<b>Sensor Type</b>	Gap sensor , Fixed transmissive sensor , Fixed reflective sensor
<b>Media Types</b>	Direct Thermal receipt, anti-UV receipt, gap label, center alignment Inter-label gap size from 2 mm to 4 mm. 3 mm preferred
<b>Width</b>	2.28" (59 mm) fixed
<b>Thickness</b>	Min 0.0508 mm, Max 0.165 mm
<b>Media roll Diameter</b>	Max. 1.57" (40 mm)
<b>Printer Language</b>	GPOS Emulations or EZPL / GZPL / GEPL Emulations
<b>Software Label Design Software</b>	GoLabel (for EZPL only), GoApp (Andriod),GoApp (iOS)
<b>Driver</b>	MAC, Linux, Windows 2000 / XP / VISTA / Windows 7 / Windows 8.1/Windows 10
<b>DLL</b>	Win CE, .NET, Andriod, Windows Mobile, Windows 2000 / XP / VISTA / Windows 7 / Windows 8.1
<b>Resident Fonts Bitmap Fonts</b>	6, 8, 10, 12, 14, 18, 24, 30, 16x26 and OCR A & B. 0°, 90°, 180°, 270° rotatable
<b>TTF Fonts</b>	TTF Fonts (Bold / Italic / Underline ). 0°,90°, 180°, 270° rotatable
<b>Download Fonts Bitmap Fonts</b>	90°, 180°, 270° rotatable, single characters 90°, 180°, 270° rotatable
<b>Asian Fonts</b>	16x16, 24x24, Traditional Chinese (BIG-5), Simplified Chinese (GB2312), Japanese (S - JIS), Korean (KS - X1001)
<b>TTF Fonts</b>	90°, 180°, 270° rotatable and 8 times expandable in horizontal and vertical directions TTF Fonts (Bold / Italic / Underline ). 0°,90°, 180°, 270° rotatable
<b>Barcodes 1-D Bar codes</b>	Code 39, Code 93, EAN-8, EAN-13, EAN 8/13 (with 2 & 5 digits extension), UPC-A, UPC-E, UPC-A and UPC-E with EAN 2 or 5 digit extension, Interleaved 2-of-5 (I 2 of 5), Interleaved 2- of 5 with Shipping Bearer Bars, Codabar, Code 128 (subset A, B, C), EAN 128, RPS 128, UCC 128, UCC/EAN-128 K-Mart, Random Weight, Postnet, ITF 14, China Postal Code, HIBC, MSI, Plessey, Telepen, FIM, GS1 DataBar, German Post Code, Planet 11 & 13 digit, Japanese Postnet, Standard 2 of 5, Industrial 2 of 5, Logmars, Code 11, ISBT -128, Code 32
<b>2-D Bar codes</b>	PDF417, Datamatrix code, MaxiCode, QR code, Micro PDF417, Micro QR code and Aztec code, Code 49, Codablock F, TLC 39
<b>Code Pages</b>	CODEPAGE 437, 850, 851, 852, 855, 857, 860, 861, 862, 863, 865, 866, 869, 737 WINDOWS 1250, 1251, 1252, 1253, 1254, 1255, 1257 Unicode UTF8 · UTF16BE · UTF16LE
<b>Graphics</b>	Resident graphic file types are BMP and PCX, other graphic formats are downloadable from the software
<b>Interfaces</b>	RS232 + USB 2.0 port, mini-B type connector Bluetooth 2.1 + EDR
<b>Control Panel</b>	4 dual color LEDs for Power, Battery, Communication, Error status indication. 3 buttons for Power, Feed and BT functions
<b>Power Adapter</b>	Switching power supply I/P: 100 / 240 V AC, 50 / 60 Hz, DC 9 V / 2.2 A
<b>Battery</b>	Rechargeable DC 7.4 V Lithium-ion battery, 1150 mAH or higher capacitance
<b>Environment Operation Temperature</b>	14 °F to 122 °F (-10°C to 50°C)
<b>Storage Temperature</b>	-4 °F to 140 °F (-20°C to 60°C)
<b>Humidity Operation</b>	10 – 90 % , non - condensing.
<b>Storage</b>	10 – 90 % , non - condensing.
<b>IP Rating</b>	Intrusion Protection, IP42 requirement for case design, IP54 for protective case
<b>Drop Level</b>	1.5 meter height
<b>Agency Approvals</b>	CE EMC, FCC part 15B class B, FCC Part 15C, SRRC, NCC, CB, UL, cUL
<b>Dimension Height</b>	2.0" (51 mm)
<b>Width</b>	3.3" (84 mm)
<b>Length</b>	5.1" (129.55 mm)
<b>Weight</b>	0.72 lbs ( 325 g), with battery
<b>Options &amp; Accessories</b>	Switching power supply USB cable RS-232 cable Li-ion battery 4-bay battery charger station Car charger adapter Protective case

\*\*Specifications are subject to change without notice. All company and/or product names are trademarks and/or registered trademarks of their respective owners.

Minimum print height and maximum print speed specification compliance can be dependent on non-standard material variables such as label type, thickness, spacing, liner construction, etc. Godex is pleased to test non-standard materials for minimum print height and maximum print speed capability.



# Applications

## Applications for Labels & Barcodes

MX20 support label & barcode printings Anywhere and Anytime.



### Warehouses, Logistic & Transportation

Cross Docking, inventory management, receiving / shipping, work - in - process tracking, or related industrial applications.

### Retail

Content labels, receipts for registered mails, invoices & receipts, postage labels, etc.

### Parking Management

Parking receipt, parking ticket, and so on.

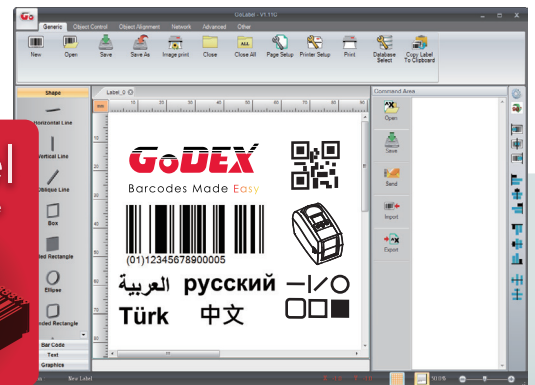
## GoDEX

### LABEL DESIGN SOFTWARE

GoLabel Software / User Friendly

GoLabel is based on a WYSIWYG (what you see is what you get) user interface, makes everything so easy for you to create and print barcode labels. GoLabel is the first - choice label design software that you can't miss it!

Go visit [www.godexintl.com](http://www.godexintl.com) and download GoLabel to experience it!



## GoDEX

### RIBBONS

High quality original GoDEX thermal transfer ribbons

GoDEX offers premium thermal transfer ribbons that will fit most of your printing applications.

- Wax
- Wax / Resin
- Resin
- Near Edge

